

Shuinan Smart City Development and Construction Progress

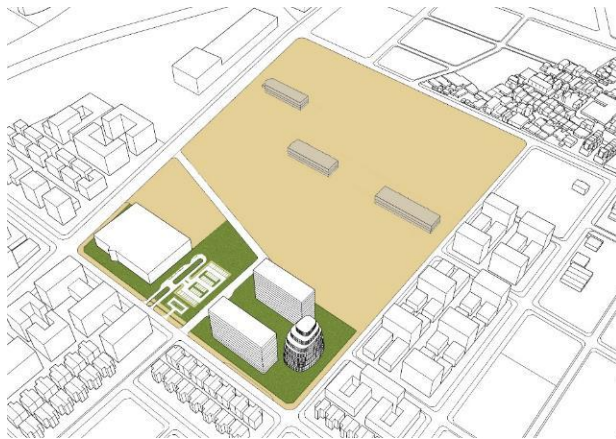


資料來源：台中市政府都市計畫

Shuinan Campus -Development Plan

- Ownership of 16 hectares of land on Shuinan Campus in January 2018
- Taichung City Government approved to deliberate the urban design of the first four buildings through the “Full Street Profile Development and Planning and Divisional Development Plan” of the Shuinan Campus in May 2018.

First Phase (2018~2020)



Administration Building 、 Research Building 、 Dormitory 、 International Medical Teaching and Research Service Center etc.

Construction started in June 2018, and is expected to be opened in September 2020.

Second Phase (2021~2024)



Multi-purpose gym (including student activity center), medical innovation center, alumni center, research and development, industry cooperation center, industry cooperation department (Cultural industries area), etc.

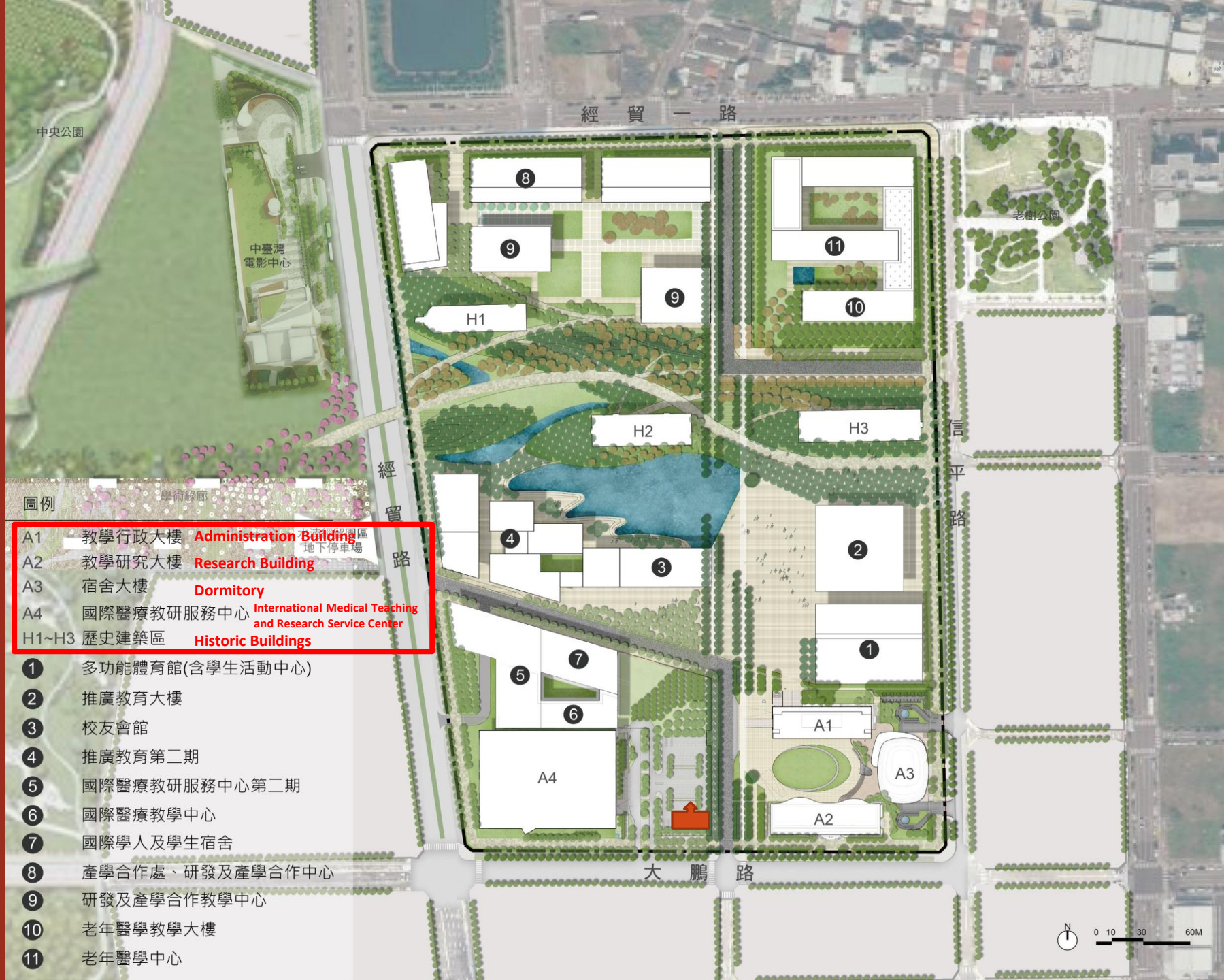
Third Phase (2025~2027)



The second phase of the International Medical Teaching and Research Service Center

Geriatrics Center with an internship institution, etc.

International students and Dormitory



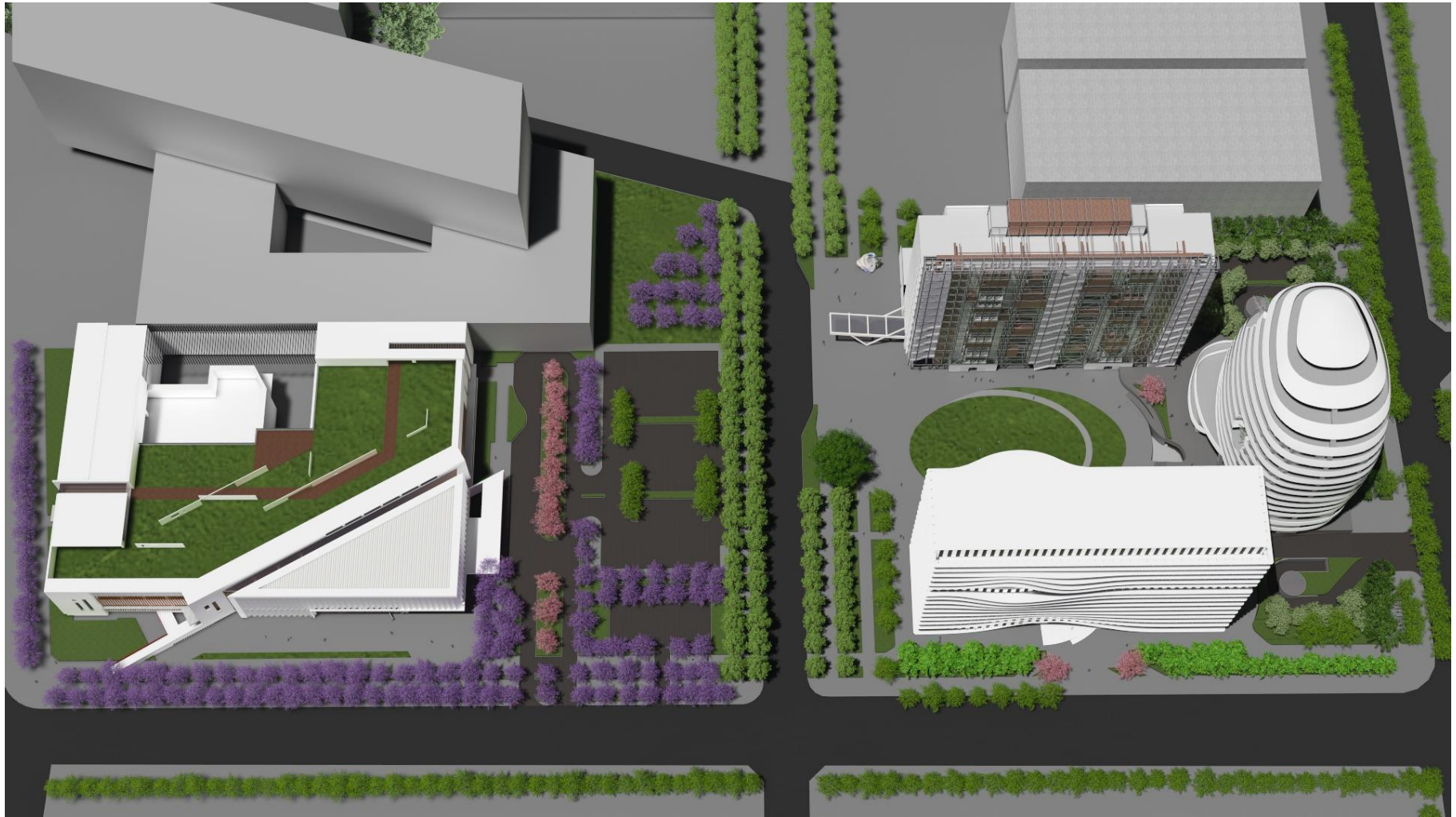
圖例

- A1 教學行政大樓 **Administration Building**
- A2 教學研究大樓 **Research Building**
- A3 宿舍大樓 **Dormitory**
- A4 國際醫療教研服務中心 **International Medical Teaching and Research Service Center**
- H1~H3 歷史建築區 **Historic Buildings**

- ① 多功能體育館(含學生活動中心)
- ② 推廣教育大樓
- ③ 校友會館
- ④ 推廣教育第二期
- ⑤ 國際醫療教研服務中心第二期
- ⑥ 國際醫療教學中心
- ⑦ 國際學人及學生宿舍
- ⑧ 產學合作處、研發及產學合作中心
- ⑨ 研發及產學合作教學中心
- ⑩ 老年醫學教學大樓
- ⑪ 老年醫學中心

N 0 10 30 60M

First phase of construction



First phase of construction

- It is expected to be opened in September 2020.
 - A1 Administration Building (13 floors)
 - A2 Research Building (12 floors)
 - A3 Dormitory (13 floors)
- Use unit (excluding the teaching and administrative units of the current Beigang campus)
 - **Teaching units:** College of Pharmacy, Biopharmaceutical and Food Sciences, Health Care, Public Health, Humanities & Sciences, and the freshmen of College of Medicine, Chinese Medicine, and dentistry
 - **Administrative units:** Office of the President, Academic Affairs, Office of Graduate Student Affairs, Office of Student Affairs, Office of General Affairs, Office of Research and Development (Administration Section), Office of Global Affairs, Center for Faculty Development, Office of Human Resources, Office of Finance, Joint Operations Office
- Parking space: 426 cars and 1,291 motorcycles (including underground and ground)
- Sports venue: Temporary basketball court*2, volleyball court*1, indoor sports space

Construction Progress

